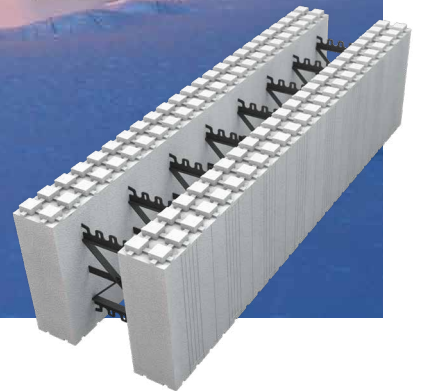


THERMOMUR®

ICF building system



THERMOMUR®

Scandinavia's leading ICF building system

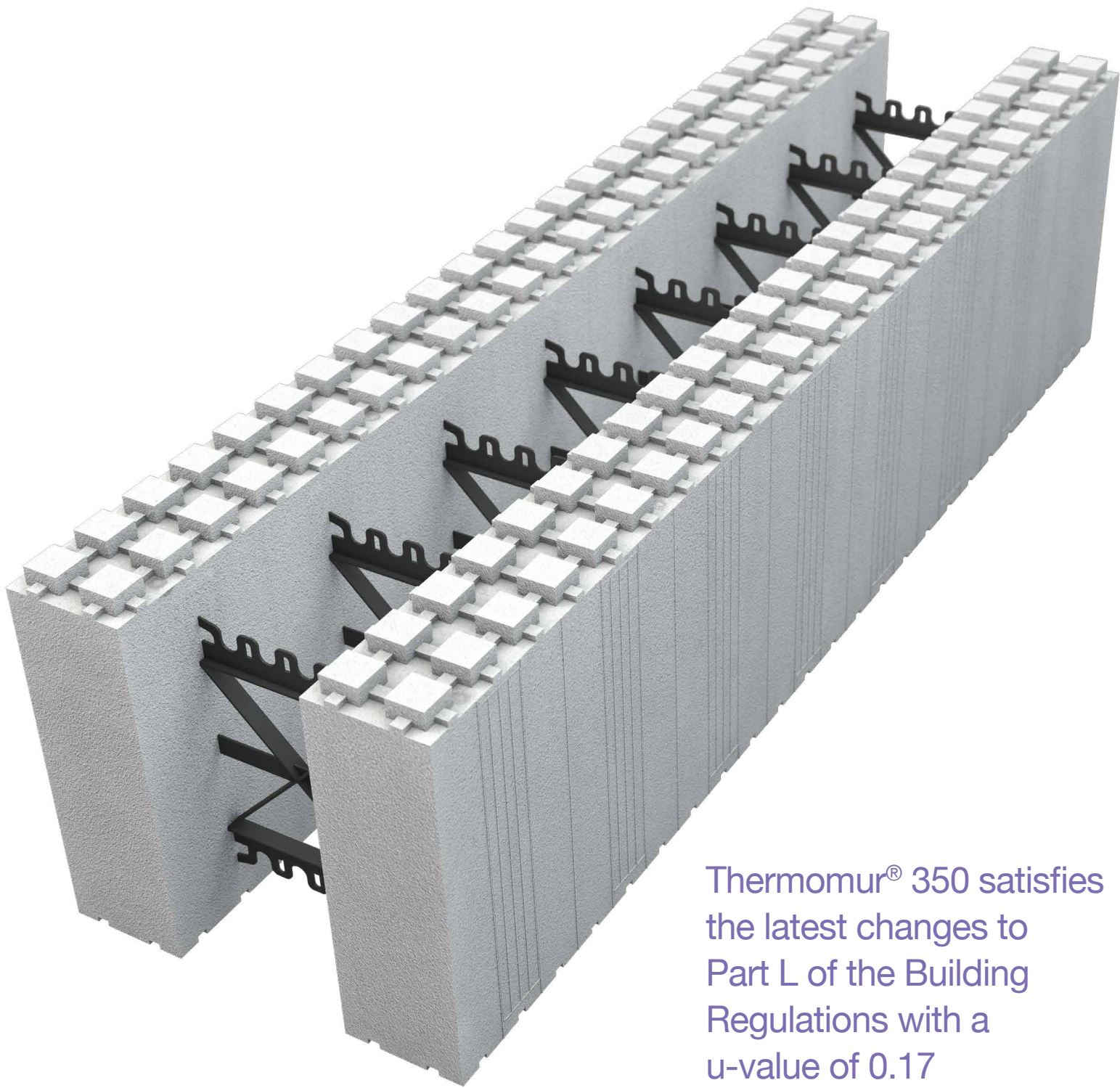
THERMOMUR® is an insulated concrete forms (ICF) building system based on moulded blocks of expanded polystyrene (EPS), JACKOPOR®.

The blocks are stacked as bricks, reinforced and filled with concrete. A thoughtful and wide range of blocks provide a complete and unique building system for all types of building requirements and designs.

With THERMOMUR® you have a versatile ICF building system which is very easy to work with and healthy to live in.

THERMOMUR® features high quality, excellent insulation properties and 35 years of experience in the harshest of Nordic winters. To assure this quality on a lasting basis whilst providing customer-focused optimisation, our engineers continuously refine the THERMOMUR® ICF building system.

Architects, builders and planners appreciate in particular the outstanding material properties; such as low weight, optimum insulation value, the wide product range and the flexible, but simple, practical use of THERMOMUR®.



Thermomur® 350 satisfies the latest changes to Part L of the Building Regulations with a u-value of 0.17

Why THERMOMUR® ICF?



Optimum insulation properties
U-value from 0.31 to 0.11



Insulated walls for domestic and commercial buildings



Resistant to water and moisture



High sound reduction



No indoor air emissions



Fire tested by SP Fire 105



Low weight
3 kg per element



Easy to work with
Rapid hence reduced cost of construction



Can be covered with bricks, render or wood



Durable



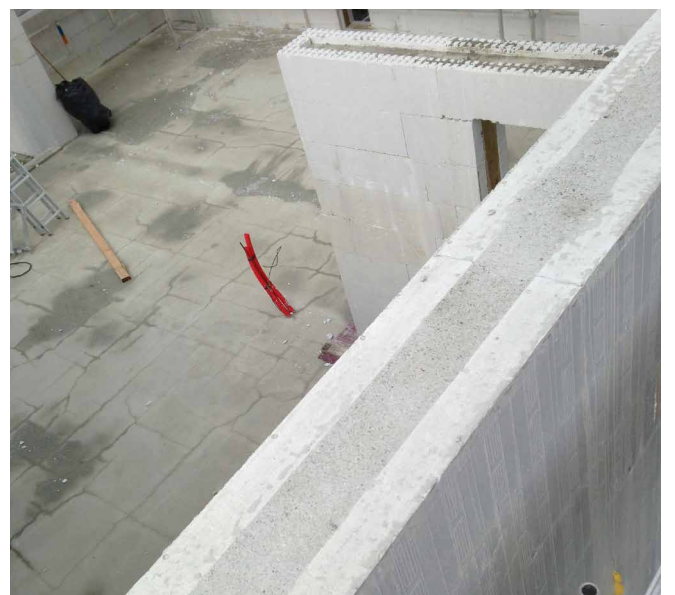
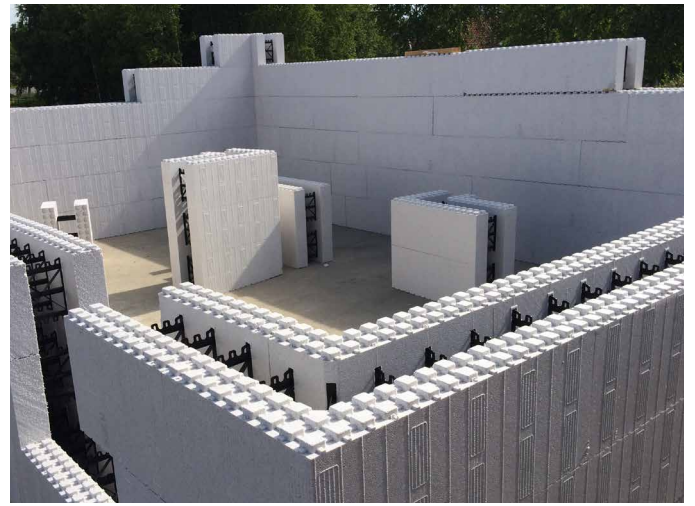
Complete with European Technical Approval (ETA)

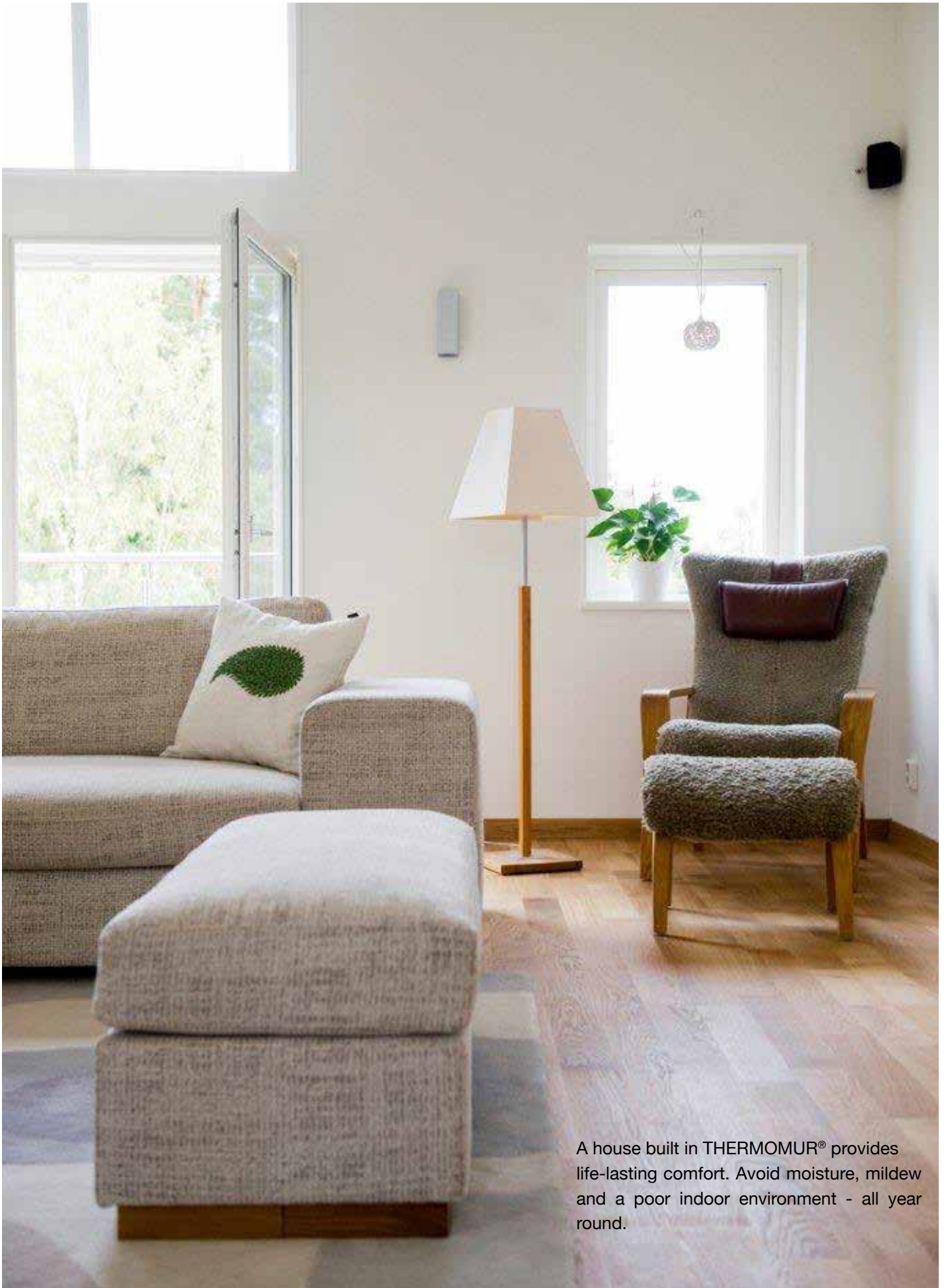
THERMOMUR® provides a two sided thermally insulated, airtight construction that offers optimum energy efficiency for homes. The building system can satisfy the latest changes to part L of Building Regulations right up to Passive House standards.

THERMOMUR®'s unique design allows us to meet ever demanding thermal insulation and air tightness standards with the minimum of additional components and construction processes.

THERMOMUR® blocks are very light and clean to work with. The walls are built quickly and solidly on site, hence reducing the cost of construction.

THERMOMUR® is a smart, easy-to-use solution that provides construction and insulation in one process and outstanding living comfort. Buildings set up in THERMOMUR® require little maintenance and are extremely durable.





A house built in THERMOMUR® provides life-lasting comfort. Avoid moisture, mildew and a poor indoor environment - all year round.



THERMOMUR®
A safe investment

Health and comfort.

A house built in THERMOMUR® provides a lifetime of comfort. Technical properties such as outstanding thermal insulation, airtightness, high compressive strength and solid concrete core provide up to 70% better energy performance over traditional construction, and give you a house with a dry, warm and healthy indoor climate while bringing down energy bills. Excellent sound reduction and fire protection make THERMOMUR® a safe investment both for the present and the future.

THERMOMUR® offers a wide variety of possibilities regarding exterior surface treatment, such as render, bricks, timber - or a mix. Whatever the choice, the house will be easy to maintain.

THERMOMUR® is tested and certified by international technical institutes. The building system is also subject to strict internal production control and is used daily by professional craftsmen. THERMOMUR® building system features excellent Scandinavian quality and high insulation properties developed as a result of 35 years of experience.





THERMOMUR® home in Östersund, Sweden. Rounded curves covered with bricks and render.

Design © Pål Ross, Fotograf Mikael Damkier



THERMOMUR®
The ICF building system
for flexible design

Realize your dream home.

When discussing creative design with your architect, the choice of both building method and building system is crucial. THERMOMUR® offers many opportunities. Beautiful and timeless structures can easily be fulfilled, and progress on the construction site is fast.

For the architect, it's satisfying to be able to realize both the customer's and the builder's many and often demanding desires for design and technical properties.

Do you dream of a modern home with straight lines, angular shapes and render facade? Or are you looking for a "softer" structure, maybe with curved lines, bricks or timber cladding?

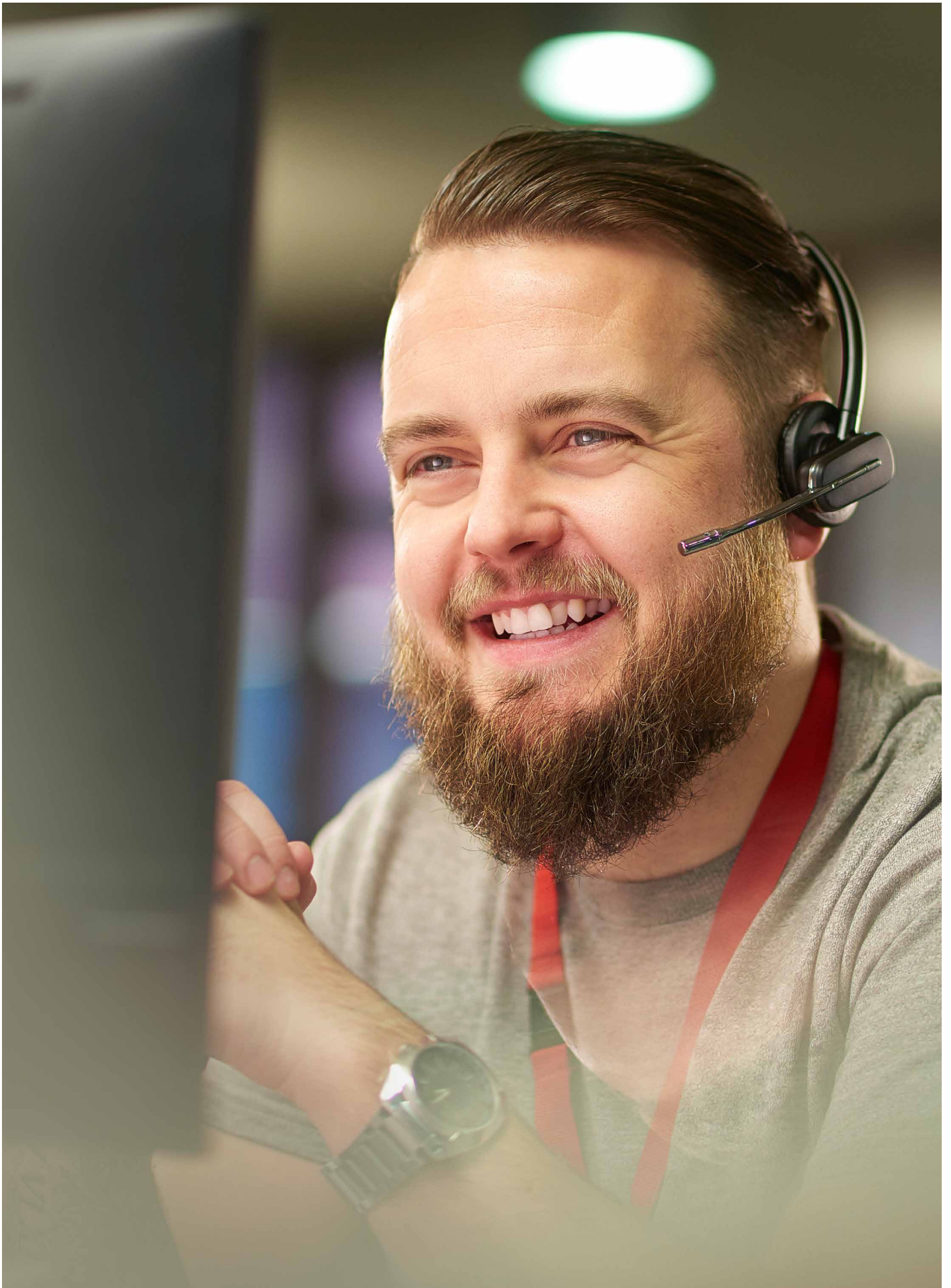
The choice is yours!

THERMOMUR® is available as full-bodied BIM objects that can be integrated straight into architects drawing programs.

That's why we say that Jackson Thermomur® is the architect's dream solution.

bimbear.com







jackon-insulation.co.uk

Technical support at Jackon is provided by dedicated THERMOMUR® professionals who help with the calculation and facilitation of both small and large THERMOMUR® projects. Our technical support provides professional help and friendly support, and make the design process both easy and efficient.

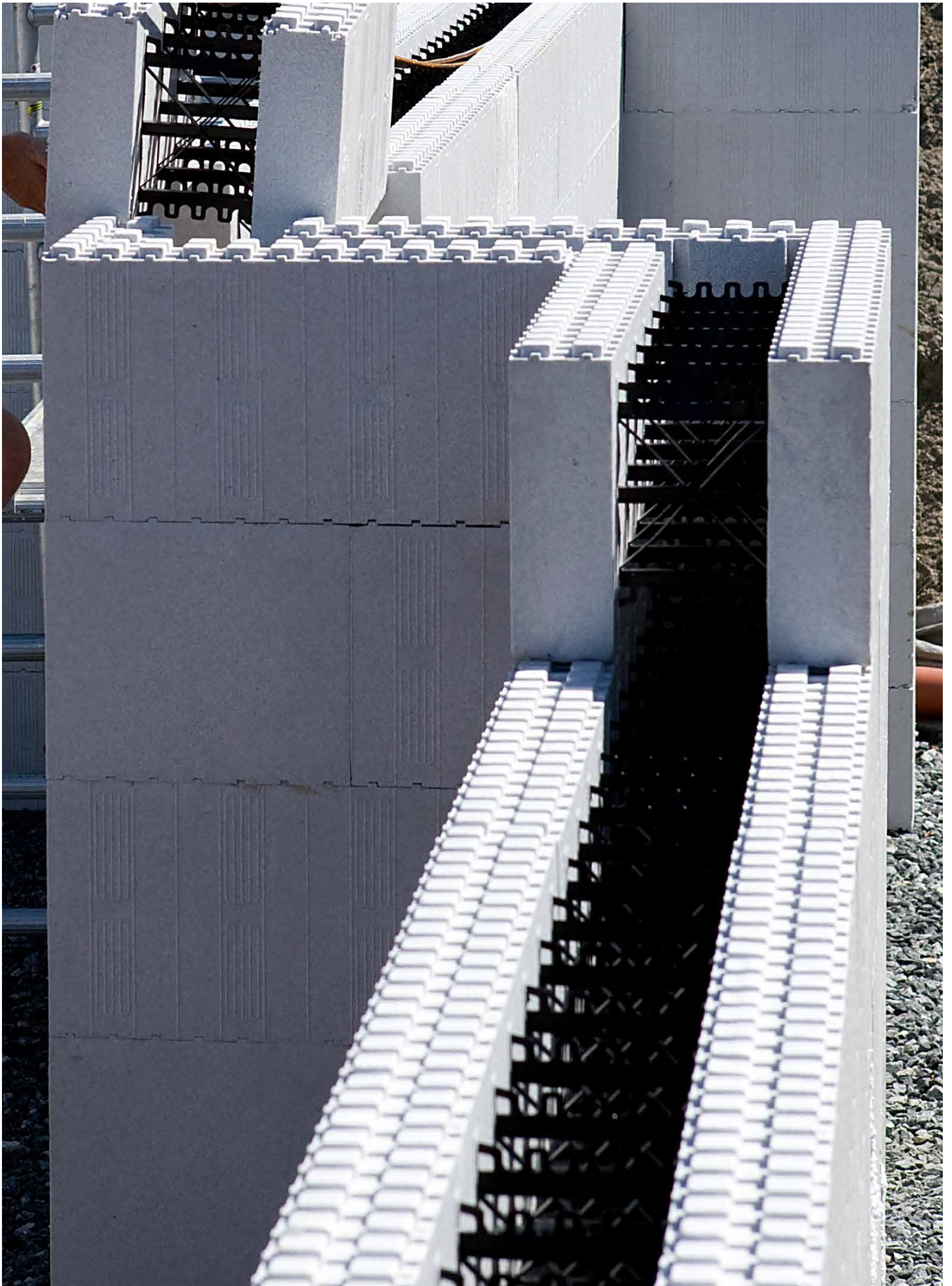
Our highest priority is to ensure an optimal start on your building site so you can enjoy your new project while we handle the practical details!

We know what we're talking about, just ask!

Our website provides valuable design tools and resources, such as:

- THERMOMUR® calculation program
- technical details library
- installation instructions
- brochures
- videos
- project photos
- contact information
- access to a JACKON construction centre
- full bodied THERMOMUR® BIM objects







THERMOMUR® History & Development

Sustainable Scandinavian design

In 1956, the factory Jackon factory was established on the south coast of Norway, producing insulating boards of expanded polystyrene (EPS), JACKOPOR®. In the early 1980's, the idea of producing insulated concrete forms (ICF) was founded. THERMOMUR® was developed and, throughout the next decades, established as a successful ICF building system in Scandinavia.

The development of the product series continued step-by-step with new building regulations, modern living, design demands and feedback from craftsmen. Professional people, hard work and smart decisions turned THERMOMUR® into a great success.

Jackon's 60 years of polystyrene manufacture ensures high quality components which in turn ensure accurate and robust construction. After 35 years of research and development, THERMOMUR® now comprises of 6 unique series. The concept of THERMOMUR® is still the same as the original idea - only small changes have been made since we started producing the first series.

Today, THERMOMUR® is the market leading ICF building system in Scandinavia, resisting the harshest of Nordic winters.



Six series for sustainable buildings of different types

THERMOMUR® 350

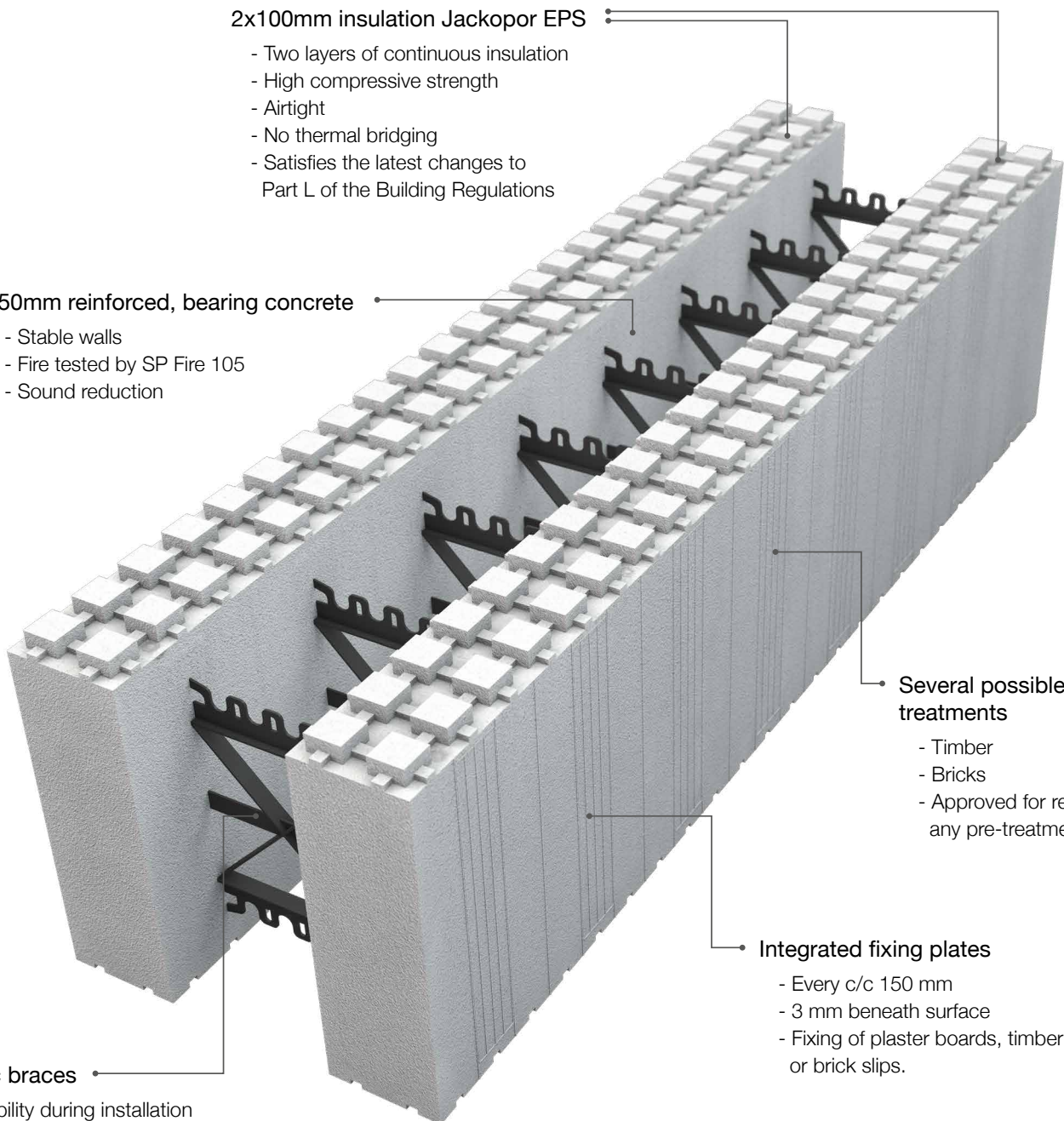
- U-value=0.17
- Format 350mm x 1200mm
- 150mm bearing concrete
- Plastic braces
- Integrated fixing plates
- Suitable for multi-storey houses

2x100mm insulation Jackopor EPS

- Two layers of continuous insulation
- High compressive strength
- Airtight
- No thermal bridging
- Satisfies the latest changes to Part L of the Building Regulations

150mm reinforced, bearing concrete

- Stable walls
- Fire tested by SP Fire 105
- Sound reduction



Several possible exterior treatments

- Timber
- Bricks
- Approved for render without any pre-treatment

Integrated fixing plates

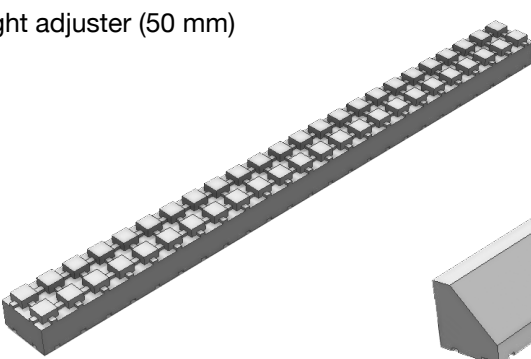
- Every c/c 150 mm
- 3 mm beneath surface
- Fixing of plaster boards, timber or brick slips.

Plastic braces

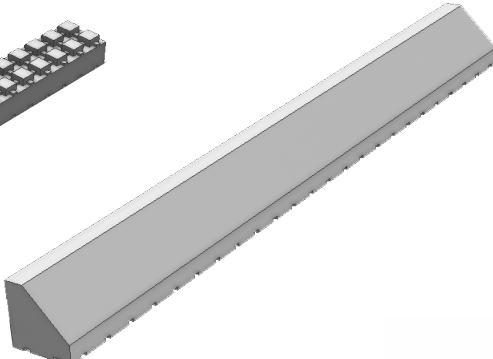
- Stability during installation
- Reinforcement for the concrete core
- Easy installation of rebars

THERMOMUR® accessories

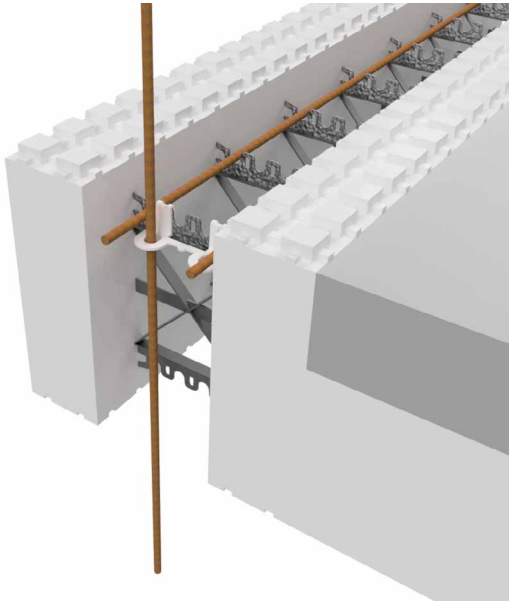
Height adjuster (50 mm)



Re-usable protectionslips



Clip for vertical reinforcement



Alingment system
- Including channel, catwalk bracket, turnbuckle and foot pad



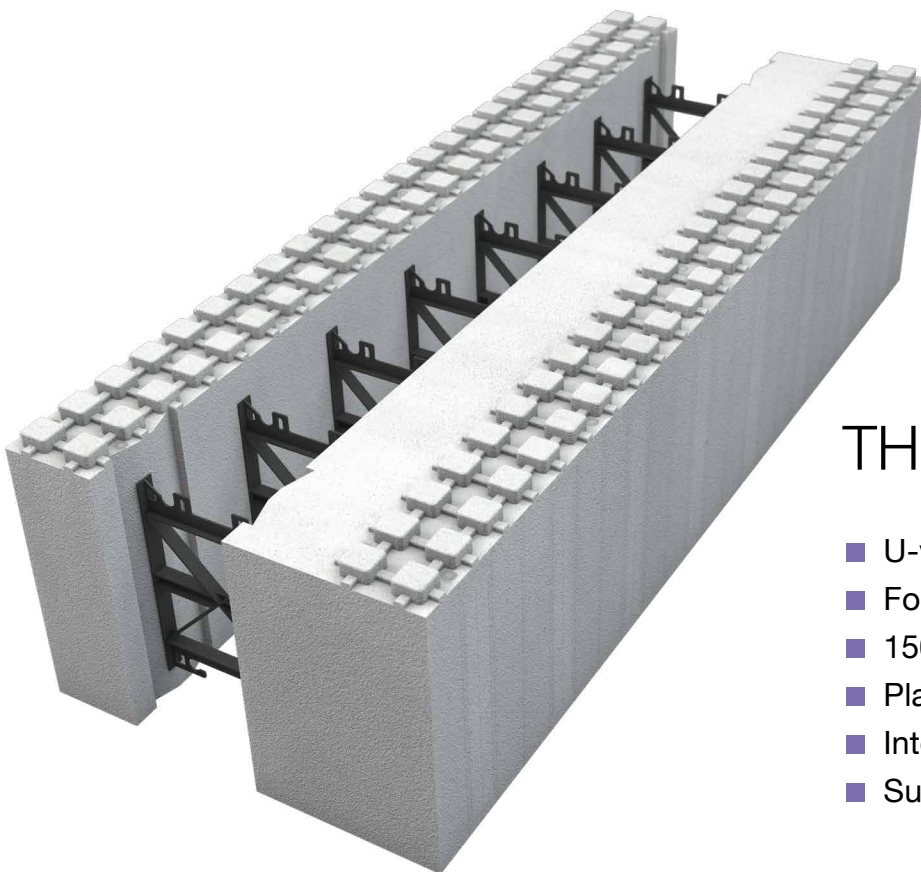
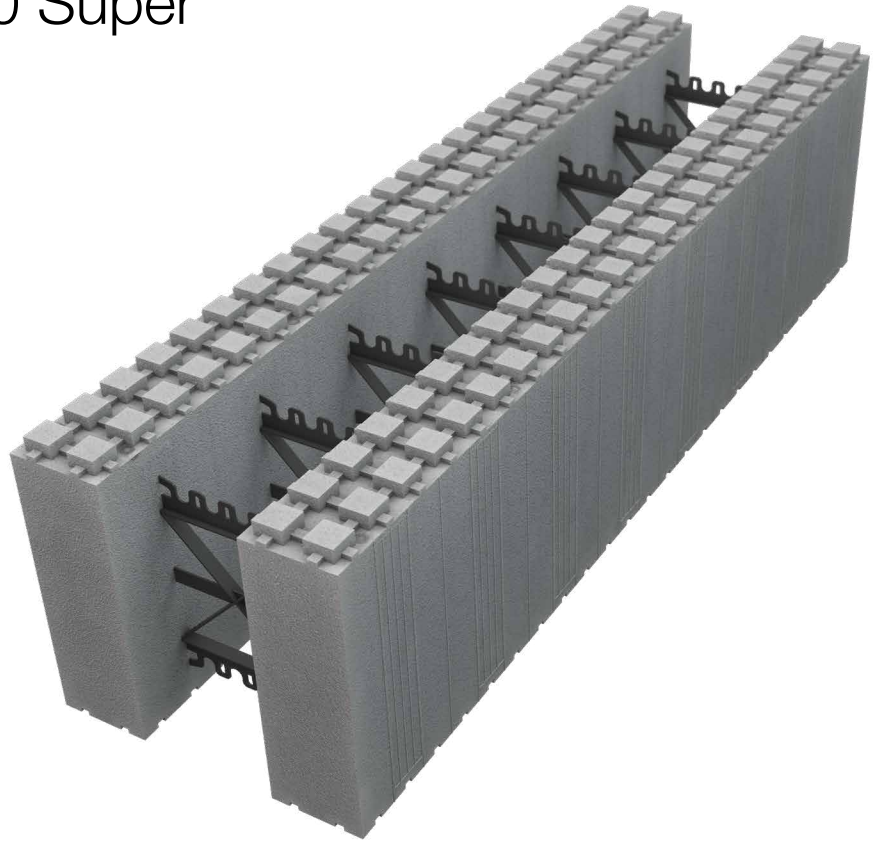
Pre-shaped rebar links



Please discover full range of Thermomur-series, blocks and accessories at jackon-insulation.co.uk

THERMOMUR® 350 Super

- U-value=0.15
- Format 350mm x 1200mm
- 150mm bearing concrete
- Plastic braces
- Integrated fixing plates
- Suitable for multi-storey passive houses

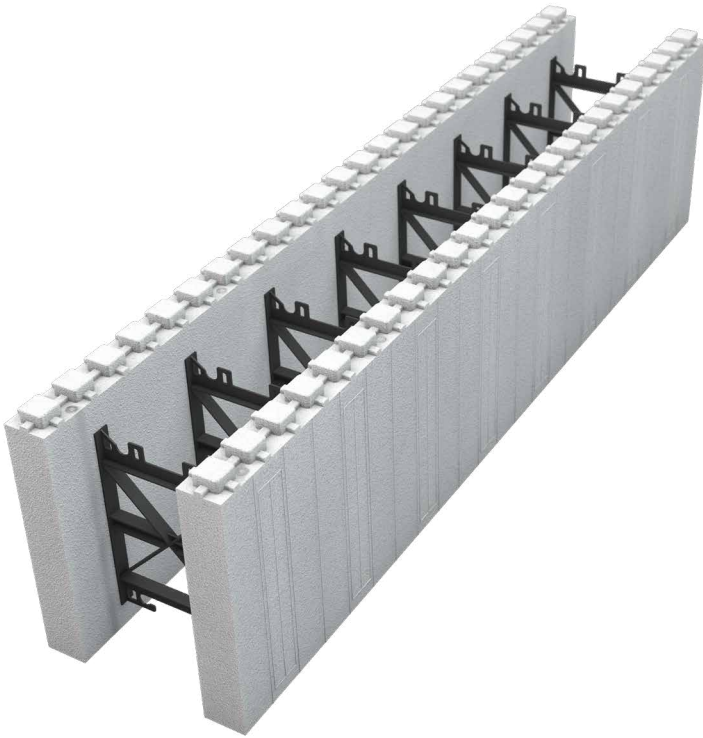


THERMOMUR® 450

- U-value=0.11
- Format 450mm x 1200mm
- 150mm bearing concrete
- Plastic braces
- Integrated fixing plates
- Suitable for multi-storey passive houses

THERMOMUR® 200

- U-value=0.31
- Format 200mm x 1200mm
- 100mm bearing concrete
- Plastic braces
- Integrated fixing plates
- Suitable for garages and commercial buildings

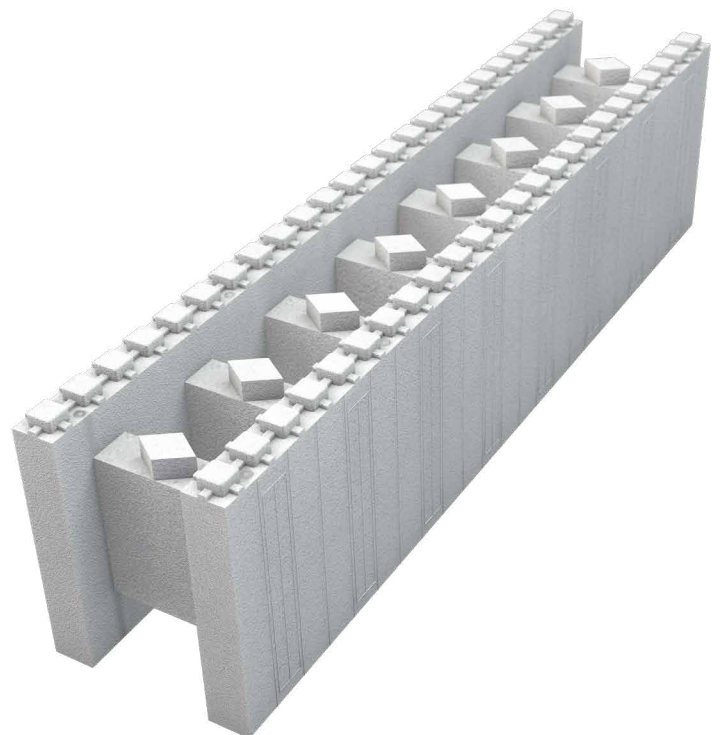


THERMOMUR® 250x

- U-value=0.31
- Format 250mm x 1200mm
- 150mm bearing concrete
- Plastic braces
- Integrated fixing plates
- Suitable for garages and commercial buildings

THERMOMUR® 250

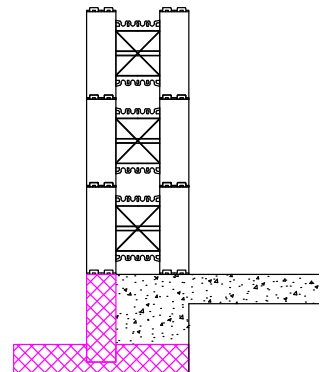
- U-value=0.31
- Format 250mm x 1200mm
- 150mm concrete
- Suitable for garages and commercial buildings



FOUNDATION SOLUTIONS

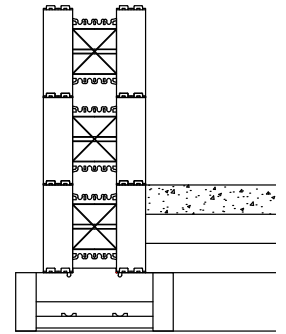
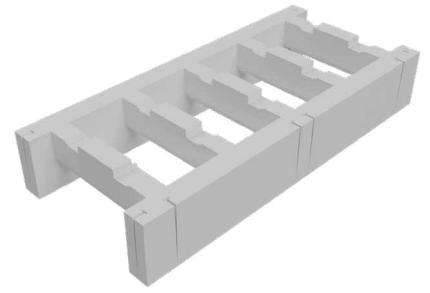
JACKODUR® Atlas

Thermal insulation and formwork system for floor plates of JACKODUR® (XPS)

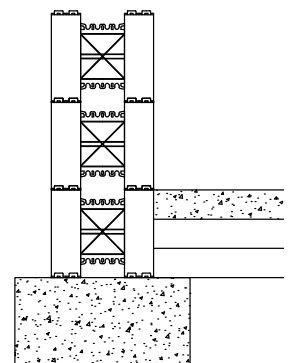


Please find technical details jackon-insulation.co.uk

Jackon foundation block



Strip foundation



Please find technical details jackon-insulation.co.uk

Solutions for construction. Simple but effective.

JACKON UK Limited
Unit 5 Ormside Close
Hindley Industrial Estate
Hindley Green
WN2 4HR

Tel +44 (0) 1204 2210 89
Fax +44 (0) 1942 2537 11
E-Mail: info@jackon.co.uk
www.jackon-insulation.co.uk

Your dealer:

